

Keeping Your iMIS System in Tip-Top Shape

Presented by:

Association Technology Solutions



About ATS

- Serving iMIS community since 1995
- Full-service Authorized iMIS Solutions Provider (AiSP)
- Application development to extend the functionality of iMIS
- 2015 & 2016 Authorized iMIS Solution Provider (AiSP) of the Year

Hosted by



Presenter:

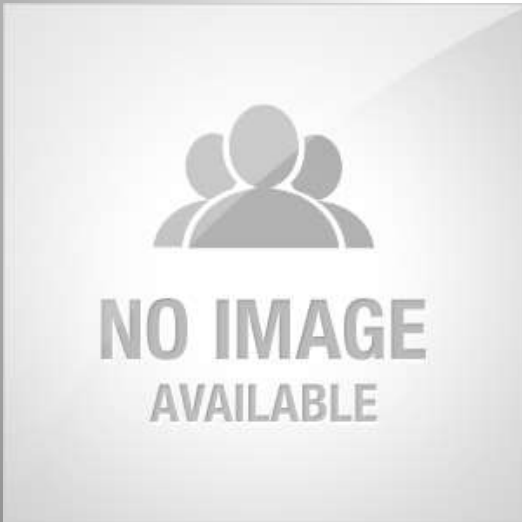
Randy Richter

Director of Technology Solutions,
Partner

Association Technology Solutions, LLC

Direct: (720) 945-7256

Email: rrichter@atsol.org



Moderator:

Richard Banks

Sales Manager

Association Technology Solutions, LLC

Direct: (571) 213-4785

Email: rbanks@atsol.org

Why does performance matter?

- Time is Money
- Users have a short attention span
- Slow Websites result in member abandonment



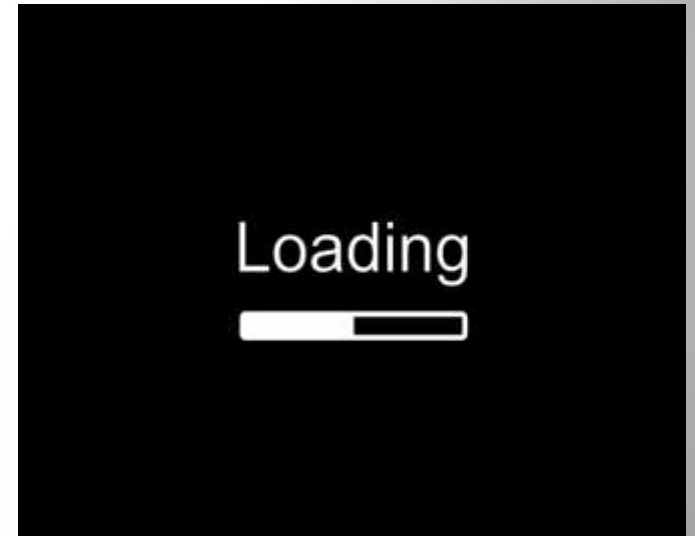
Recommendations

- Define success and measure it
- Web pages should load quickly. 40% of visitors will abandon your site if it fails to load in 3 seconds. Target a quick load time.



What are areas to review?

- Hardware/Operating System
- Networks
- iMIS Software
- RiSE Website



Hardware/Operating System

- How old is your hardware?
- Are you on Premise, Hosted, or Cloud?
- Is iMIS on 1, 2, or 3 servers?
- Windows Server 2008 R2 is already 8 years old



Recommendations

- Trend is to move from on premise to hosted or cloud.
- Cloud computing can be ramped up quickly to meet changing needs.
- Cloud computing provides redundancy
- Can access from anywhere
- Separate SQL and a Web/Application server
- Might consider separate terminal server
- Keep up to date with Microsoft patches (SQL and OS)



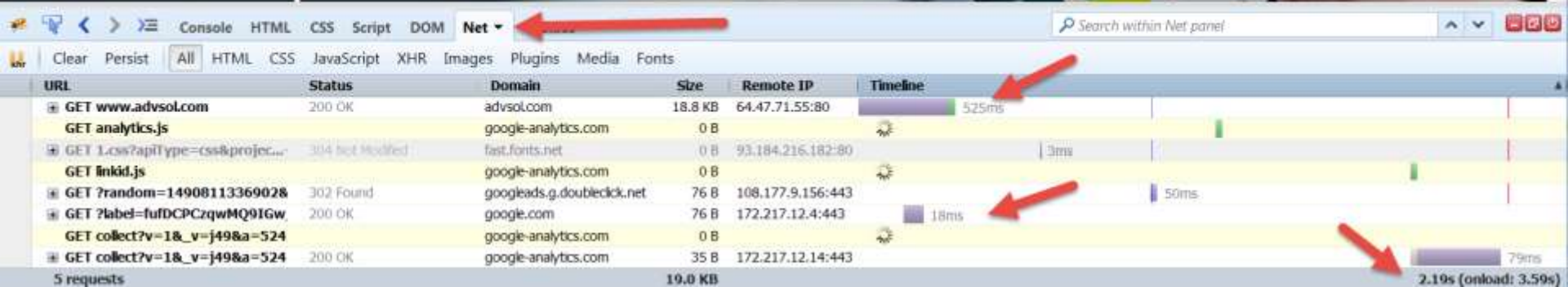
Network

- 1, 2, or 3 server model?
- Accessing the staff site outside of the firewall
- Mobile considerations
- How long does it take to load a page?



Network

Grow Revenue. Reduce Expenses.
Improve Performance.



Network Recommendations

- Keep SQL server close to iMIS Application Server
- Consider using remote access for iMIS desktop until it is discontinued
- Keep iMIS staff view open to remote staff without a vpn
- Monitor Bandwidth
- Consider using SSL for access



iMIS Software

- What version are you running?
- Have you implemented triggers and stored procedures?
- How complex are your sql queries and iqa's
- New versions are quicker and have more capabilities



Maintenance

- Rebuild Indexes under maintenance tools
- Shrink your database
- Delete/purge records marked for deletion
- Fix or remove broken views
- Look for missing or user defined table rows
- Apply iMIS patches



Data Integrity

- Create quality control dashboard
- Look for duplicates
- Consider purging old data
- Close meetings
- Remove unused general lookup tables
- Validate data with lookup tables



Recommendations

- Update to the latest version
- Staff should start using web-based staff site
- Look at iMIS logs
- Look at event viewer logs
- Look at SQL logs
- Look at IIS logs
- Run Performance Monitor when running a transaction



RiSE Website

- How many pages do you have?
- How deep are your menus nested?
- How many graphics/charts are dynamically created on a page?



Recommendations

- Update to the latest version
- Run a single publishing service
- Keep pages simple/mobile first
- Consider using RiSE for everything instead of two CMS's
- Use third party add-ons instead of direct SQL reads/writes
- Right-size images
- Keep your folder structure clean



Summary

- Define your goals for performance
- Keep up on the latest versions of software
- Consider hosting or cloud solutions
- Keep data clean
- Goal is to be able to have dependability in a user friendly environment
- Plan that desktop will go away
- Plan that you will someday have continuous upgrades of software for enhancements and bug fixes.

Questions & Answers



Presenter:

Randy Richter

Director of Technology Solutions,
Partner

Association Technology Solutions, LLC

Direct: (720) 945-7256

Email: rrichter@atsol.org



Moderator:

Richard Banks

Sales Manager

Association Technology Solutions, LLC

Direct: (571) 213-4785

Email: rbanks@atsol.org



More from ATS

Looking for more from the experts at ATS?

Upcoming Webinars

<http://atsol.org/Webinars>

schedule of upcoming webinars

Past Webinars

<http://atsol.org/PastWebinars>

*video recordings and
downloadable presentation slides*

Other Questions?

Email: info@atsol.org

Online: <http://www.atsol.org>

Phone: (720) 945-7252

