

Turn Your Member Directory into One of Your Most Valuable Member Services

Presented by:

Association Technology Solutions



About ATS

- Serving iMIS community since 1995
- Full-service Authorized iMIS Solutions Provider (AiSP)
- Application development to extend the functionality of iMIS
- 2015 Authorized iMIS Solution Provider (AiSP) of the Year

Hosted by



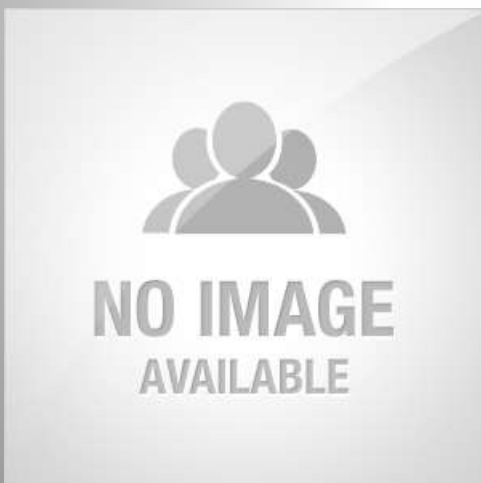
Presenter:

Brent Sitton

Director of Product Development
Association Technology Solutions, LLC

Direct: (720) 945-7260

Email: bsitton@atsol.org



Moderator:

Richard Banks

Sales Manager

Association Technology Solutions, LLC

Direct: (571) 213-4785

Email: rbanks@atsol.org

Directory Types

- Searchable Member Directories (Individuals and Companies)
 - LinkedIn style Networking
 - Public Practitioner Search
 - Buyers' Guide

Levels of Capability

- [iMIS Out of the Box Search and Profile](#)
- Member Guidance
- [Geocoding](#)
- [Custom Styling](#)

Member Guidance

The screenshot shows the iMIS member profile page for Allison Banks. At the top, there is a navigation bar with 'Sign Out', 'Allison Banks', 'Cart', and social media icons for Facebook, Twitter, and LinkedIn. A search bar and language dropdown are also present. Below the navigation is a menu with 'ABOUT US', 'MEMBERSHIP', 'EVENTS', 'SHOP', 'GIVE NOW', 'CERTIFICATION', and 'COMMUNITIES'. The main content area features a profile card for Allison Banks, a 'Non Member' with a 'View my public profile' button. A message box says 'Thank you for creating an account with us, Allison! Please add a picture so that we can know you better!'. The profile is divided into sections: 'Engagements' (Engagement Score), 'My Engagement' (No data found), 'Engagement Rank' (0% Peer Rank Percentile), 'My profile' (About, Past Experience, Education, Website), and 'My addresses' (Home Address, Work Address).

Member Guidance

The screenshot shows the iMIS member profile page for Allison Banks. At the top, there is a navigation bar with 'Sign Out', 'Allison Banks', 'Cart', and social media icons for Facebook, Twitter, and LinkedIn. A search bar and a language dropdown set to 'English' are also present. Below the navigation is a menu with 'ABOUT US', 'MEMBERSHIP', 'EVENTS', 'SHOP', 'GIVE NOW', 'CERTIFICATION', and 'COMMUNITIES'. The main content area features a profile card for Allison Banks with a photo and the text 'Type: Non Member'. A 'View my public profile' button is located below the photo. A message box at the top right says 'Thank you, Allison! Now, please add your public profile so that others in the college can get to know you!'. The profile is divided into several sections: 'About Me' (selected), 'My Participation', 'Preferences', and 'Demographics'. Under 'About Me', there is a section for 'Engagements' with a large '0' and 'Engagement Score'. To the right, 'My Engagement' shows 'No data found'. Below that, 'Engagement Rank' is displayed as '0%' with 'Peer Rank Percentile' listed underneath. The 'My profile' section includes 'About', 'Past Experience', 'Education', and 'Website'. The 'My addresses' section shows 'Home Address' and 'Work Address' with a plus sign to add more.

Decisions, Decisions

- Profile Page
 - Members Only Data vs. Public information
 - List vs Search Criteria vs Keyword Search
 - Location or Geocoded search?
 - Clickable Categories
 - Badges
 - Charge for preferred access?

Inspiration

Out of the box

- [IAPD Directories](#)
- [ASLRRRA Staff List](#)

Out of the box with Custom ATS modules

- [NiUG Committees](#)
- [LOC City Search](#)
- [ASLRRRA Supplier Search](#)

Inspiration cont.

Mostly Custom Directories

- [OPW Doctor Search](#)
- [Aging Life Care Expert Search](#)
- [NIRSA Buyers' Guide](#)

Questions & Answers



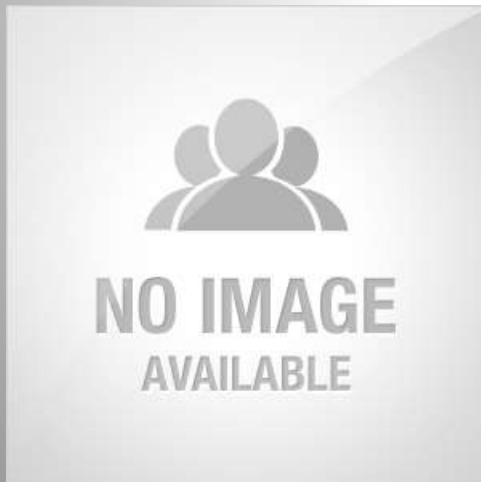
Presenter:

Brent Sitton

Director of Product Development
Association Technology Solutions, LLC

Direct: (720) 945-7260

Email: bsitton@atsol.org



Moderator:

Richard Banks

Sales Manager

Association Technology Solutions, LLC

Direct: (571) 213-4785

Email: rbanks@atsol.org

More from ATS

Looking for more from the experts at ATS?

Upcoming Webinars

<http://atsol.org/Webinars>

schedule of upcoming webinars

Past Webinars

<http://atsol.org/PastWebinars>

*video recordings and
downloadable presentation slides*

Other Questions?

Email: info@atsol.org

Online: <http://www.atsol.org>

Phone: (720) 945-7252

