

Scraping Your Existing Web Design into RISE

Presented by:

Association Technology Solutions



About ATS

- Serving iMIS community since 1995
- Full-service Authorized iMIS Solutions Provider (AiSP)
- Application development to extend the functionality of iMIS
- 2015 Authorized iMIS Solution Provider (AiSP) of the Year



Hosted by



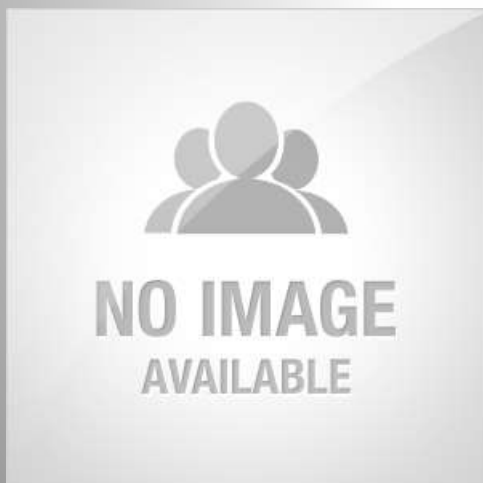
Presenter:

Randy Richter

Director of Technology Solutions, Partner
Association Technology Solutions, LLC

Direct: (720) 945-7256

Email: rrichter@atsol.org



Moderator:

Richard Banks

Sales Manager

Association Technology Solutions, LLC

Direct: (571) 213-4785

Email: rbanks@atsol.org



Website Models

RiSE only

- Entire Website in RiSE
 - No integration needed
 - One design serves all web pages
 - Single URL
 - Responsive
 - Every page knows who you are



Website Models

RiSE and Third Party CMS

- RiSE and Third Party CMS
 - Results in two CMS solutions
 - Need to develop seamless member experience
 - Goal is that look and feel is identical

The logo for Ektron, featuring the word "ektron" in a bold, sans-serif font. The "e" is yellow and the "ktron" is blue.The logo for Sitecore, featuring a red circular icon with a white "S" and the text "sitecore" in a bold, sans-serif font. Below it is the tagline "Own the experience™".The logo for WordPress, featuring a circular icon with a white "W" and the text "WORDPRESS" in a bold, sans-serif font.The logo for Kentico, featuring a white sunburst icon and the text "Kentico" in a bold, sans-serif font.The logo for Drupal, featuring a blue water drop icon and the text "Drupal" in a bold, sans-serif font.The logo for DotNetNuke, featuring a red and white icon and the text "DOTNETNUKE" in a bold, sans-serif font.The logo for Sitefinity, featuring a colorful circular icon and the text "sitefinity" in a bold, sans-serif font.The logo for EPiServer, featuring the text "EPiSERVER" in a bold, sans-serif font.

Website Models

Questions to Ask

- What can you do in the third party CMS that you cannot do in iMIS RiSE?
- What should be in RiSE and what should be in your Non-RiSE CMS?
 - If a web page needs to “get data from” or “push data to” iMIS it should be considered for RiSE
 - Authentication/Account creation
 - My<association> page
 - Ecommerce
 - Directories
 - Sign up forms

Third Party CMS

- After decisions are made about what components to manage through RiSE, what is left to be managed by third party CMS?
 - Home page
 - Static content
 - Menus/Navigation
 - CSS

What Problems does Scraping Solve?

- Leverage investment in third party CMS
- Provide a seamless look and feel to the members
- Eliminate need to manage look and feel in both CMS and iMIS
 - Maintain menus in one place
 - Maintain design in one place
 - Maintain images and CSS in one place

What is ATS Scraping?

- Setting up the RiSE template to dynamically apply the design of a third party CMS to the RiSE page in real time
 - If menus change in CMS they change on RiSE page
 - If CSS changes in CMS they change on RiSE page
 - If CMS page renders a “Welcome Randy” message at the top of the screen, RiSE also shows that message
 - Not an iFrame

Challenges

- Often hosted on separate servers
- Third Party CMS can contain JavaScript and other widgets
- Unified Searching
- Personalization
- Locking down access to pages

Considerations when Scraping

- Performance/Latency of CMS
- Primary CMS controls Menus not RiSE
- Primary CMS controls CSS not RiSE
- RiSE site will only be as responsive as third party CMS
- SSL Certificate for both sites (wildcard will work)
- Single Sign On with Login in iMIS



Approach

- Create a “template” page in your CMS that will be used to scrape from
- ATS installs a dll on your server that provides the scraping technology
- MasterPage in RiSE is modified
- Configurations are made to identify what page in the CMS to scrape from.
- Access to JavaScript and other components is configured manually

Examples

- Association of General Contractors of California
- <http://www.agc-ca.org/>
- Website built in Ektron
- Desire to use that design in RiSE
- Integrated SSO with Ektron using ATS Ektron Bridge
- Scraping using ATS Scrape Technology



“About us” Page in Ektron

ABOUT US

AGC of California has been the Voice of the Construction Industry for nearly 100 years.

About Us

WHO WE ARE

Founded in 1920, the **Associated General Contractors of California** has been the premier organization of choice by experienced and next generation construction and contracting professionals through dedicated advocacy and top-tier access with state and local governments, education and career development, and networking with industry leaders through innovative programs and events.

MISSION STATEMENT

The mission of the Associated General Contractors of California is to be the recognized leader in providing business opportunities, education, training, resources, and advocacy for its members while advancing sound public policy for the construction industry.

AGC MEMBERS SPAN A DIVERSE INDUSTRY

With more than 1,000 contractors, specialty, and associate member companies throughout California, AGC

State Headquarters Office

AGC of California
3095 Beacon Blvd.
West Sacramento, CA 95691
916.371.2422 / 916.371.2352

[All office locations](#)



Standard OOB RiSE Page using a Template



ASSOCIATED GENERAL
CONTRACTORS OF CALIFORNIA
Your voice in the Construction Industry

[SIGN OUT](#) [TEST](#) [CART \(2\)](#)

Keyword Search

[HOME](#) [STORE](#) [EVENTS](#)

[Home](#) > [My Account](#)

Test User

Test

[Agee Construction Corporation](#)



Type
Contractor Member In

[View my public profile](#)

[About Me](#) [Participation](#) [Preferences](#) [Communications](#) [Interests](#) [Notifications](#)

MY PROFILE

About Project Manager at Agee Construction since 2005.

Past Experience Project Engineer

Education

Website

MY ADDRESSES

Primary Address

PO Box 629
Clovis, CA 93613-0629
UNITED STATES
[Show map](#)
(555) 555-2525
(559) 299-3503 fax
jjish11@hotmail.com

You are not due for renewal.

[Renew Now](#)




New RiSE site using Scraping

ACCOUNT PAGE

Test User

Test

Agee Construction Corporation



Type
Contractor Member In

About Me Participation Preferences Communications Interests Notifications

My Profile

About Project Manager at Agee Construction since 2005.

Past Experience Project Engineer

Education

Website

My Addresses

Primary Address

PO Box 629
Clovis, CA 93613-0629
UNITED STATES
[Show map](#)



Examples

- Georgia Chamber of Commerce
- <http://www.gachamber.com/>
- Website built in Wordpress
- Desire to use that design in RiSE
- Not Integrated with ATS Wordpress SSO at this time
- Scraping using ATS Scrape Technology

“About us” Page in Wordpress



About The Georgia Chamber

For over 100 years the Georgia Chamber of Commerce has worked to keep, grow and create jobs to make Georgia a better state for business. Our advocacy, policy and thought leadership help us ensure Georgia's economic competitiveness, attract new investments as well as promote growth and prosperity for all business. As the state's largest business advocacy organization our areas of focus include the following:

GEORGIA CHAMBER IMPACT AND INFLUENCE

The size of our network matters and impactful. We represent investors in every county of our state with a diverse cross section of over 500 industry sectors. Our membership includes both small storefronts and large corporations-no matter the size or type of business. We provide proactive policy, aggressive advocacy and meaningful investor services that impact your bottom line.

- Employees of Members – 2,000,000+
- Grassroots Network – 80,000+
- Chamber Members – 40,000+
- Board of Directors – 400+
- Government Affairs Council – 250+
- Board of Governors – 75
- Executive Committee – 7

About the Georgia Chamber

[About The Georgia Chamber](#)

[Executive Leadership](#)

[International Advisory Council](#)

[Board Members](#)

[Chamber Affiliates](#)

[Staff Directory](#)

[Small Business Advisory Committee](#)

[Small Business Webinars](#)

[Georgia Business Action Network](#)

[Government Affairs Council](#)

[Georgia Chamber Political Action Committee \(PAC\)](#)

OOB RiSE Login using Template

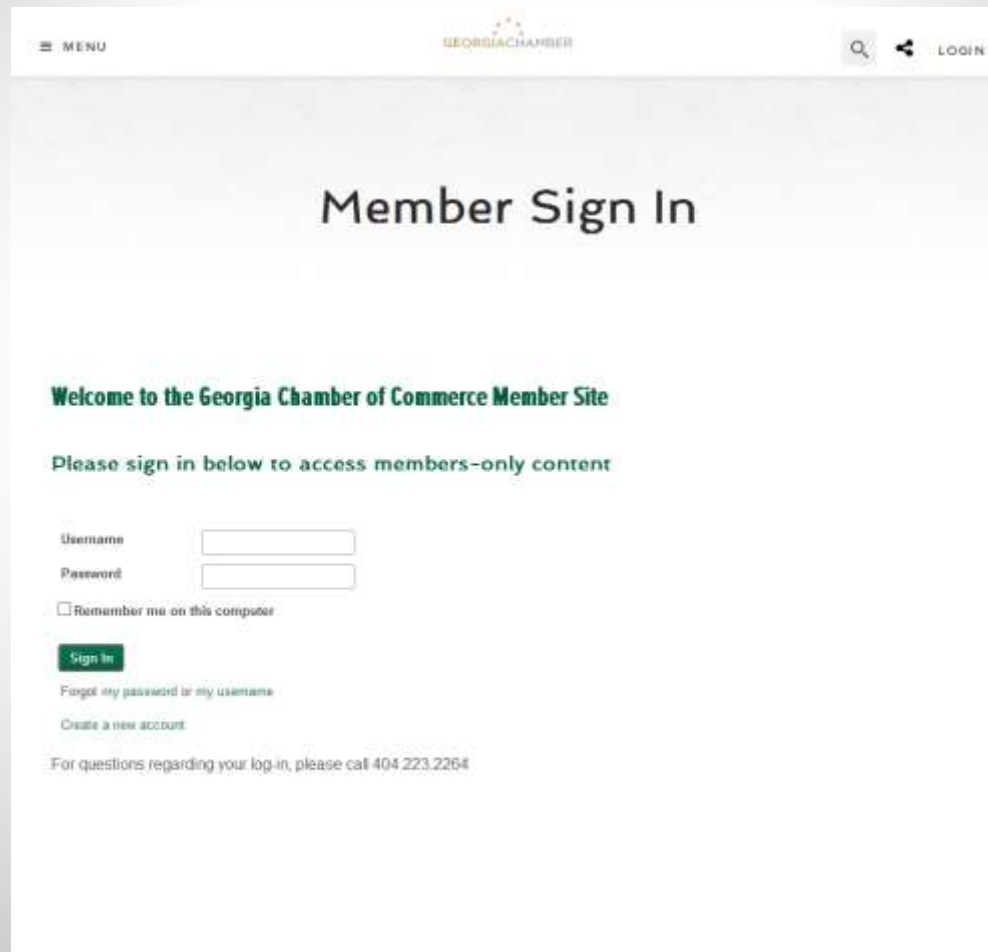
The screenshot shows the login page for the Georgia Chamber of Commerce Member Site. At the top, the logo for the Georgia Chamber is displayed, followed by navigation links for 'Sign In', 'Create Account', 'Home', 'About the Chamber', and 'Blog'. There are also social media icons for Facebook, Twitter, and LinkedIn, and a search bar labeled 'Keyword Search'. Below the navigation is a menu with categories: 'ADVOCACY', 'MEMBERSHIP', 'SMALL BUSINESS', 'ECONOMIC DEVELOPMENT', 'EVENTS', and 'PRESS ROOM'. A 'JOIN THE CHAMBER' link is also present.

The main heading reads 'Welcome to the Georgia Chamber of Commerce Member Site'. Below this, a message states 'Please sign in below to access members-only content'. The login form includes fields for 'Username' and 'Password', a checkbox for 'Remember me on this computer', and a 'Sign in' button. There are also links for 'Forgot my password or my username' and 'Create a new account'. A contact number '404.223.2264' is provided for questions.

The footer contains links for 'Investor Benefits' and 'Community List', a 'Connect With Us' section with social media icons, and a 'Contact Us' section with the email 'info@advisot.com'. The copyright notice at the bottom reads 'Copyright © Advanced Solutions International'.



New RiSE Login using Scraping



The screenshot shows the 'Member Sign In' page of the Georgia Chamber of Commerce. At the top, there is a navigation bar with a 'MENU' icon on the left, the 'GEORGIA CHAMBER' logo in the center, and search, share, and 'LOGIN' icons on the right. The main heading is 'Member Sign In'. Below this, a green heading reads 'Welcome to the Georgia Chamber of Commerce Member Site', followed by the instruction 'Please sign in below to access members-only content'. The login form includes fields for 'Username' and 'Password', a checkbox for 'Remember me on this computer', and a green 'Sign In' button. There are also links for 'Forgot my password or my username' and 'Create a new account'. At the bottom, a note states: 'For questions regarding your log-in, please call 404.223.2264'.

New RiSE Site using Wordpress Design



Going Mobile Workbook

The Going Mobile Workbook has everything you need to know to get your mobile strategy up and going. Members receive a 10% discount on this book.

[Learn more >](#)



Annual Conference

This year's Annual Conference is fast-approaching. Sessions this year include tips for industry success and a technology exhibit. Don't miss out!

[Register now >](#)



Become a Member

Members enjoy many benefits including networking opportunities, discounts on events and in the shop and up-to-date information on industry news. Join us today!

[Join now >](#)

Examples

- American Academy of Physical Medicine and Rehabilitation
- <http://www.aapmr.org/>
- Website built in Sitefinity
- Desire to use that design in RiSE
- Using ATS Sitefinity SSO
- Scraping using ATS Scrape Technology
- Chose to remove search from RiSE pages

Homepage in Sitefinity

aaPM&R

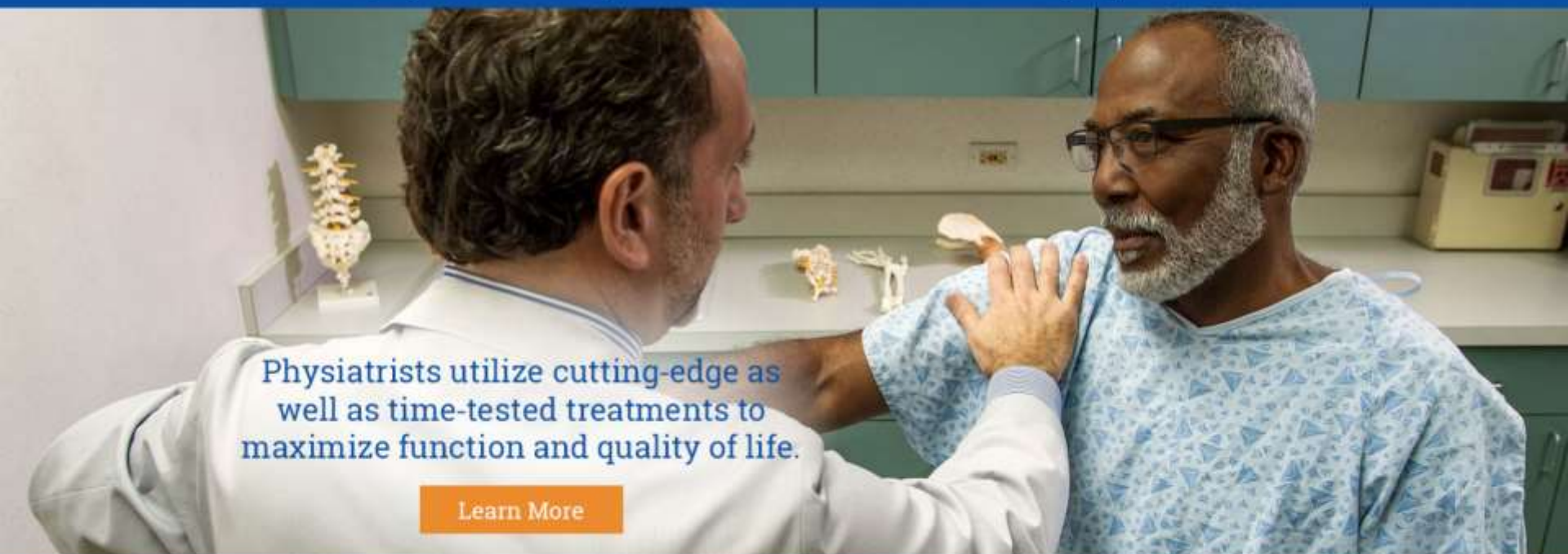
American Academy of
Physical Medicine and Rehabilitation

Member Login



[Join/Renew](#) | [Communities](#) | [mē @](#) | [PM&R Knowledge NOW @](#) | [PhyzForum](#) | [PM&R Journal](#)

[Education](#) [Quality & Practice](#) [Advocacy](#) [Career Center](#) [News & Publications](#) [About Physiatry](#) [About AAPM&R](#)



Physiatrists utilize cutting-edge as well as time-tested treatments to maximize function and quality of life.

[Learn More](#)

AAPM&R Member Communities Knowledge NOW Forum



Association Technology Solutions

RiSE Login with Scrape



American Academy of
Physical Medicine and Rehabilitation

Member Login

[Join/Renew](#) | [Communities](#) | [mē @](#) | [PM&R Knowledge NOW @](#) | [PhysForum](#) | [PM&R Journal](#)

[Education](#) | [Quality & Practice](#) | [Advocacy](#) | [Career Center](#) | [News & Publications](#) | [About Physiatry](#) | [About AAPM&R](#)

Sign In

Username

Password

Remember me

Sign In

Forgot [my password](#) or [my username](#)

[Create a new account](#)

American Academy of
Physical Medicine and
Rehabilitation

9700 W. Bryn Mawr Ave
Ste 200
Rosemont, IL 60018

Phone: (847) 737-6000

[Residents](#)

[Medical Students](#)

[Patients & Family](#)

[Member Councils](#)

[Central Nervous System](#)

[News & Publications](#)

[Quality & Practice](#)

[Advocacy](#)

[Career Center](#)

[Education](#)

[About AAPM&R](#)

[Who We Are and Our
Focus](#)

[Leadership & Governance](#)

[Volunteerism](#)

[Membership](#)



Association Technology Solutions

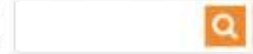
Home Page after Login

aaPM&R

American Academy of
Physical Medicine and Rehabilitation




Welcome, Randy Richter
[My Account](#) [Sign Out](#)



[Join/Renew](#) | [Communities](#) | [mE®](#) | [PM&R Knowledge NOW®](#) | [PhysForum](#) | [PM&R Journal](#)

[Education](#) [Quality & Practice](#) [Advocacy](#) [Career Center](#) [News & Publications](#) [About Physiatry](#) [About AAPM&R](#)



Physiatrists utilize cutting-edge as well as time-tested treatments to maximize function and quality of life.

[Learn More](#)

AAPM&R: Moving the Specialty and You Forward



Association Technology Solutions

After Login RiSE Page



American Academy of
Physical Medicine and Rehabilitation



Welcome, Randy Richter
[My Account](#) [Sign Out](#)

[Join/Renew](#) | [Communities](#) | [mE @](#) | [PM&R Knowledge NOW @](#) | [PhyzForum](#) | [PM&R Journal](#)

[Education](#) [Quality & Practice](#) [Advocacy](#) [Career Center](#) [News & Publications](#) [About Physiatry](#) [About AAPM&R](#)

My AAPM&R Account

Randy Richter



AAPM&R ID# 85858
Membership Class Nonmember

My Contact Information

Work Address 

4704 Harlan Street
Denver, CO 80212-7415
USA
[Show map](#)
rrichter@atsol.org

All Users: To make changes to your Name, Title, or Organization, please send a request to memberservices@aapmr.org. Your Primary E-mail Address and Username can be edited separately in the section below. To designate your Work and Home e-mails, update your details under "My Contact Information".

Members Only: Be sure to include your Organization, Title, and Work Address information, which will appear in both the Patient Referral Directory and Member

Summary

- Consider using RiSE for everything
- If you are using two CMS's decide what goes into RiSE and what goes into third party CMS
- Scraping technique can pull in a real time design into RiSE
- Design is managed in one system
- Consider SSO to lock down pages in Third Party CMS based on iMIS login credentials

Questions & Answers



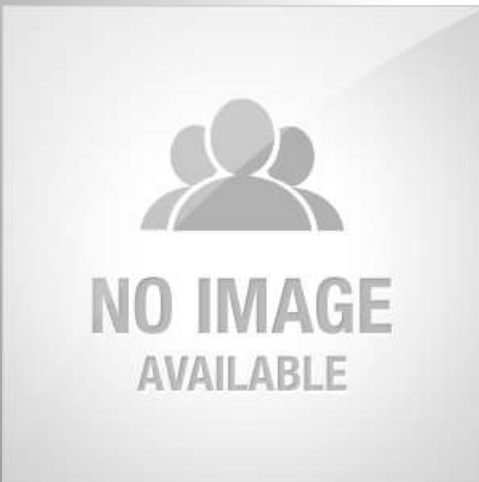
Presenter:

Randy Richter

Director of Technology Solutions, Partner
Association Technology Solutions, LLC

Direct: (720) 945-7256

Email: rrichter@atsol.org



Moderator:

Richard Banks

Sales Manager

Association Technology Solutions, LLC

Direct: (571) 213-4785

Email: rbanks@atsol.org



Questions & Answers



Presenter:

Randy Richter

Director of Technology Solutions, Partner
Association Technology Solutions, LLC

Direct: (720) 945-7256

Email: rrichter@atsol.org



Question:

Which versions of Sitecore/Ektron
does this work with?

Questions & Answers



Presenter:

Randy Richter

Director of Technology Solutions, Partner
Association Technology Solutions, LLC

Direct: (720) 945-7256

Email: rrichter@atsol.org



Question:

Which version of Sitecore does this work with?

Questions & Answers



Presenter:

Randy Richter

Director of Technology Solutions, Partner
Association Technology Solutions, LLC

Direct: (720) 945-7256

Email: rrichter@atsol.org



Question:

Can we go the opposite direction?
For example, can we build a site
design in RiSE that we can scrape for
our proprietary application?

Questions & Answers



Presenter:

Randy Richter

Director of Technology Solutions, Partner
Association Technology Solutions, LLC

Direct: (720) 945-7256

Email: rrichter@atsol.org



Question:

Are there any compatibility issues between Kentico and the ATS Online Marketplace?

More from ATS

Looking for more from the experts at ATS?

Upcoming Webinars

<http://atsol.org/Webinars>

schedule of upcoming webinars

Past Webinars

<http://atsol.org/PastWebinars>

*video recordings and
downloadable presentation slides*

Other Questions?

Email: info@atsol.org

Online: <http://www.atsol.org>

Phone: (720) 945-7252

